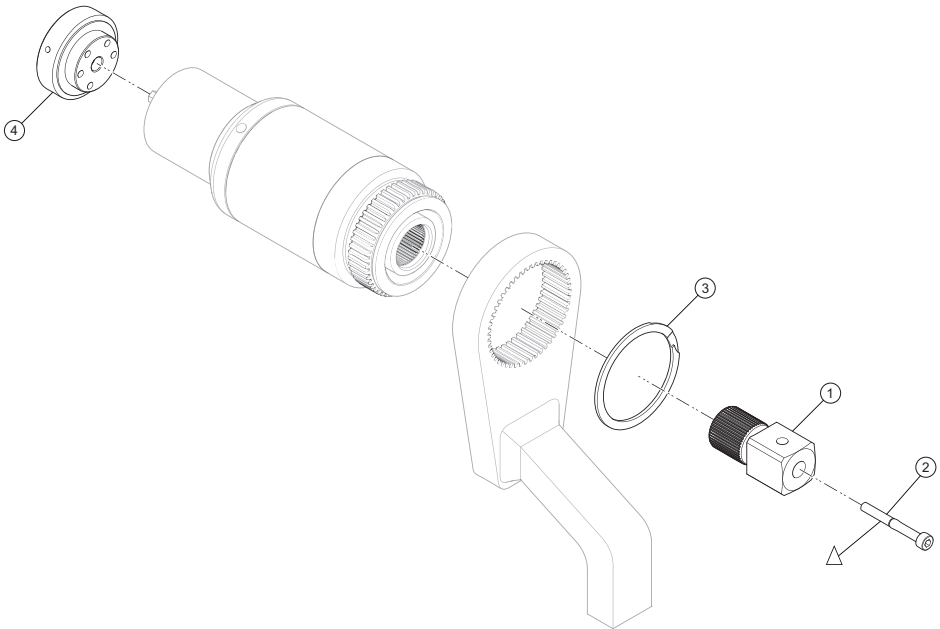


## Norbar Gearbox Assembly - Exploded View



## Norbar Gearbox Assembly - Parts List

Item	Part Description	NSP-A750-200A	NSP-A750-500A	NSP-A750-1000A	NSP-A750-1350A	NSP-A750-01K-16
1	Square Drive	NSP-299-52S12	NSP-299-52S12	NSP-299-72S12	NSP-299-72S16	TK-NSP-299-72S16
2	Square Drive Retaining Screw	NSP-299-M4X30	NSP-299-M4X30	NSP-299-M5X45	NSP-299-M5X45	
3	Circlip	NSP-299-CLP72	NSP-299-CLP72	NSP-299-CLP72	NSP-299-CLP72	NSP-299-CLP72
4	IR Pistol Adapter Kit	NSP-766-W2222	NSP-766-W2222	NSP-766-W2222	NSP-766-W2222	NSP-766-W2222

Item	Part Description	NSP-A750-2000A	NSP-A750-2700A	NSP-A750-4000A	NSP-A750-6000A
1	Square Drive	NSP-299-72S16	NSP-299-80S16	NSP-299-92S16	NSP-299-119S24
2	Square Drive Retaining Screw	NSP-299-M5X45	NSP-299-M5X40	NSP-299-M5X60	NSP-299-M5X80
3	Circlip	NSP-299-CLP72	NSP-299-CLP72	NSP-299-CLP72	NSP-299-CLP72
4	IR Pistol Adapter Kit	NSP-766-W2222	NSP-766-W2222	NSP-766-W2222	NSP-766-W2222

## Square Drive Retaining Screw Torque Spec Δ

Norbar Gearbox Torque:	Torque:
200Nm	6Nm
500Nm	6Nm
1000Nm	12Nm
1350Nm	12Nm
2000Nm	12Nm
2700Nm	12Nm
4000Nm	12Nm

1000Nm Truck Lane	<p><b>For 1000Nm, 1" Square Wheel Applications:</b></p> <p>Apply blue thread locker to square drive retaining screw. Tighten to 1Nm and then loosen 180 degrees to set screw position.</p> <p>Allow 12 hours cure time minimum.</p> <p>Note: Minimum Square Drive Gap Shall be 0.4mm</p>
-------------------	--

Note: Apply Serviceable Thread Locker to Retaining Screw (Item 2)